

DEBARKING AND CHIPPING LINES



Lines for low quality wood are mainly designed for debarking and chipping of pulp wood, extremely curve logs or logs, which cannot be used for mechanical woodworking for any other reasons. Such logs are to be chipped for further processing.

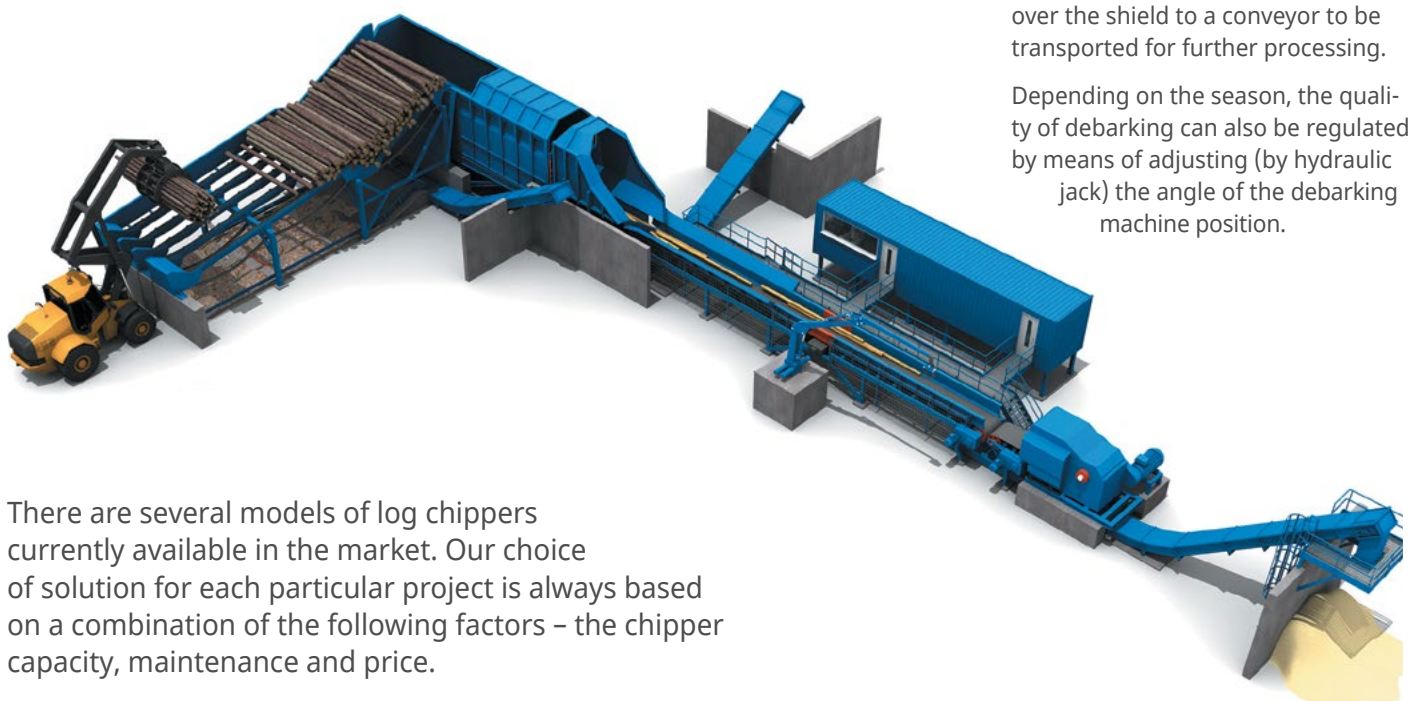
FACTS AND FIGURES OF HEKOTEK EXPERIENCE

- OVER 10 PLANTS** | in the world apply our technology in pellet production process
- 10 YEARS** | experience of debarking and chipping lines manufacture
- 5 COUNTRIES** | geography of debarking and chipping lines supplied by Hekotek in the world
- 110 M³ LOGS** | actual capacity per hour of debarking and chipping lines supplied by Hekotek

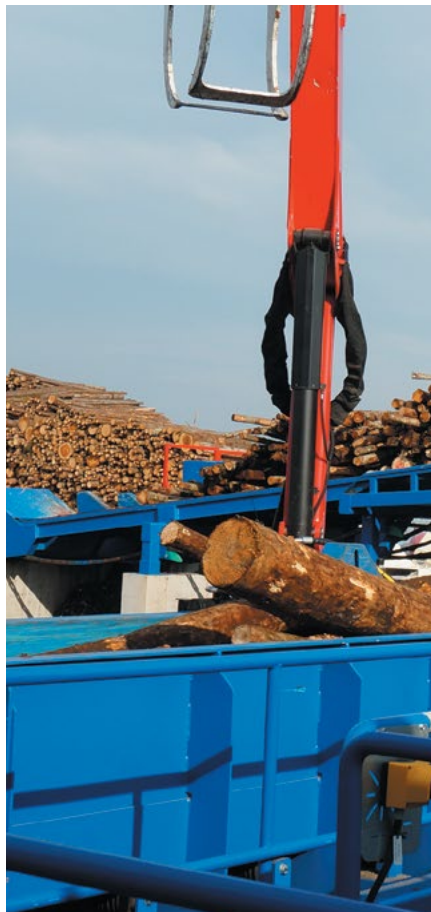
TECHNOLOGY

- The structure of the line's main machine comprises three rotating rotors with debarking teeth and a bark removal conveyor under the debarker.
- Logs of different diameters are fed to the debarker from above – from log deck and elevator normally used at sawmills. A manipulator or a wheel loader can also be used for loading of log batches, however, in this case it can be difficult to reach continuous high capacity production level.
- The machine rotors constantly turning in one direction rotate the logs and push them up and down. Due to logs rub against each other and their contact with abraders (rotor teeth) logs debarking is performed. Thus, bark removal is based on a combination of mechanical and log to log contact. The removed bark falls to a bark conveyor placed under the debarker through special slots.
- The quality of debarking is regulated by the amount of logs fed to the debarker and debarking time. For that a hydraulically adjustable shield is used. The logs are dropped over the shield to a conveyor to be transported for further processing.

Depending on the season, the quality of debarking can also be regulated by means of adjusting (by hydraulic jack) the angle of the debarking machine position.



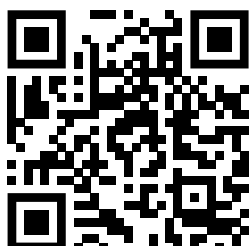
There are several models of log chippers currently available in the market. Our choice of solution for each particular project is always based on a combination of the following factors – the chipper capacity, maintenance and price.



BOTTOM-ROTOR DEBARKING – A SOLUTION FOR PELLET PLANTS

- This technical solution is especially good for modern pellet plants, where debarking of raw materials should be relatively cheap, but efficient to allow pellet manufacturers to meet one of the main demands – pellets should be non-expensive, but high quality fuel.
- Remote support of the line automation is provided.
- Debarking lines designed and manufactured by Hekotek are successfully operating at several leading European pellet plants.
- Rotors with abraders are the main tools of the debarker. Although being very rugged, they still need regular service – approximately once a year it is necessary to reweld hard-alloy brazed-tools.
- Most of the components used in our lines are available in our spare parts stock.

Reference list
of Hekotek deliveries:



POWER OF COOPERATION

Increased value of processed timber can only be achieved through effective solutions ensured by close cooperation with our customers and suppliers. We strongly believe that cooperation is the main key to success.

AS HEKOTEK
Estonia

☎ +372 605 1450
✉ hekotek@hekotek.ee

WWW.HEKOTEK.COM